

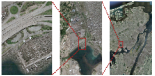
THE GONDOLA STRUCTURES

A New York City History Mystery

Have you ever seen a public structure?
They're located all the way from the Pennsylvania Turnpike
to the heart of Manhattan. But how did they get there?
The answer lies in a mystery that has been solved.
The structures were built in the 1930s and were used for
the New York City Subway. They were built by the
City of New York and the New York State Thruway Authority.
The structures were built by the City of New York and the
New York State Thruway Authority. They were built by the
City of New York and the New York State Thruway Authority.
The structures were built by the City of New York and the
New York State Thruway Authority. They were built by the
City of New York and the New York State Thruway Authority.



GLUE ME!



GLUE ME!



GLUE ME!

GLUE ME!